

TR-8 Update

Contents of Ver. 1.60

Added step loop mode

While a pattern is playing, you can loop-play the selected step.
All instruments sounded by the selected step will loop-play.

1. Press the [START/STOP] button to play the pattern.
2. Hold down the [TR-REC] button and press the [INST PLAY] button.

The [INST PLAY] button blinks, and the TR-8 is in step loop mode.

3. Press pad [1]–[16] of the step that you want to loop-play.

Loop-play begins for the selected step.

When you take your finger off of pad [1]–[16], pattern play resumes.

To cancel step loop mode, press any one of the [PTN SELECT], [TR-REC], [INST PLAY], or [INST REC] buttons.

If you hold down one of the INST select [BD]–[RC] buttons and press a pad [1]–[16], loop-play for the step continues (Hold) even after you take your finger off of the pad [1]–[16].

Fixed problem when playing the SP-404

We fixed the problem in which a MIDI Note Off message was transmitted on the wrong MIDI channel when the sample bank played by the SP-404 is F–J.

Fixed INST gain adjustment problem

We fixed the problem that had made the gain go to 100 if the [TUNE] knob was operated when the 808 Maracas [3] of the HC instrument is set to a gain of other than 100.

Contents of Ver. 1.50

Playing the SP-404A (or SP-404SX) from the TR-8

If you connect the TR-8 via MIDI to the SP-404A or SP-404SX (subsequently called the "SP"), you can use operations on the TR-8 to trigger sounds on the SP.

The order in which the TR-8's INST select buttons are arranged ([BD], [SD], ..., [RC] button) corresponds to the SP's pads [1]–[11].

MEMO

It's not possible to trigger the SP's pad [12] from the TR-8.

1. Use a MIDI cable to connect the TR-8's MIDI OUT connector to the SP's MIDI IN connector.
2. **SP** While holding down the [SHIFT] button (or [FUNC] button), press pad [9] (MIDI CH).
3. **SP** Turn the [CTRL 3] knob to set the MIDI channel to "1."
4. **SP** Press the [REC] button.

The SP's MIDI channel (Pad Base Ch.) is set to "1."

MEMO

MIDI channels 1 and 2 are used to trigger the SP from the TR-8.

In order to trigger the SP correctly, set the TR-8's MIDI channel (the MIDI channel used to trigger the TR-8's internal sounds) to something other than 1 or 2 (default: channel 10).

5. **SP** While holding down the [SHIFT] button (or [FUNC] button), press pad [10] (MIDI SYNC).
6. **SP** Turn the [CTRL 3] knob to set the MIDI synchronization mode to "tnP" (Tempo Sync) or "oFF" (Sync OFF).
7. **SP** Press the [REC] button.

The SP's MIDI synchronization mode is set to "tnP" (Tempo Sync) or "oFF" (Sync OFF).

8. **TR-8** Turn on the power, and press the DRUM SELECT [INST] button.
9. **TR-8** Press pad [16] to select which sound module is played when you press the [BD]–[RC] buttons.

The color changes each time you press pad [16].

Pad [16] status	Sound module that is played
Lit white	The TR-8's internal sounds are played.
Blinking yellow	The TR-8's internal sounds and the SP's sounds are played simultaneously.
Blinking blue	The SP's internal sounds are played.

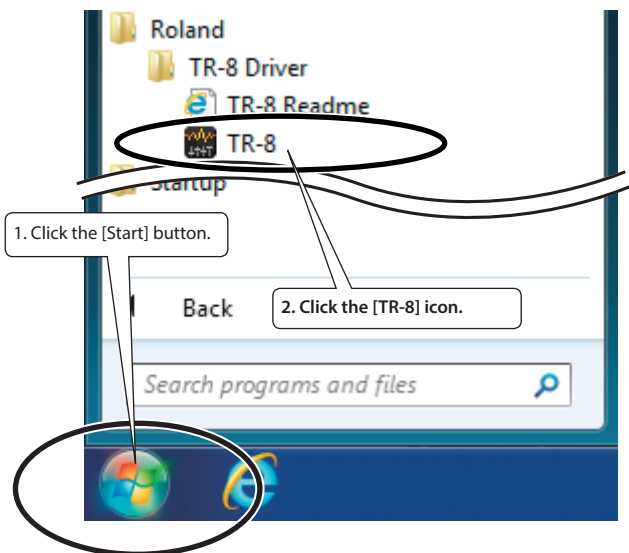
MEMO

When the pad [16] color is yellow or blue, you can turn the [TEMPO] knob to select the sample bank (or pattern bank) that is played by the SP.

Support for USB Audio Sample Rates 44.1/48/96 kHz

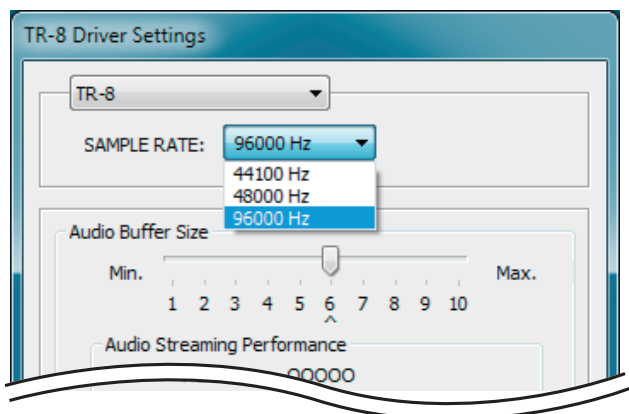
Windows users

1. Access the control panel as follows.



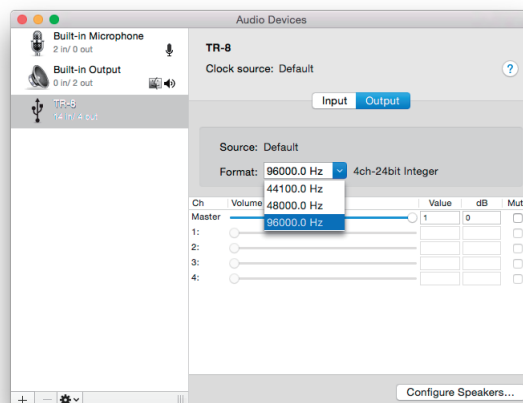
The control panel appears.

2. From the SAMPLE RATE parameter, select the sample rate.



Mac users

1. In the Finder menu item "Move," click "Application."
The application folder appears.
2. Double-click the [Utility] folder.
3. Double-click the [Audio MIDI Settings] icon.
The "Audio Devices" screen appears.
If the audio devices screen does not appear, choose the Audio MIDI Settings menu item "Windows" and click "Show Audio Devices."
4. From the Format parameter, select the sample rate.



Contents of Ver. 1.20

Additional sounds

The sounds of the TR-606 have been added.

- * These sounds are added only if the 7X7-TR8 Drum Machine Expansion is installed.

Switching the cymbal parameter operating mode

We've added a HIHAT Link mode that lets you operate the CH (closed hi-hat) and OH (open hi-hat) parameters simultaneously.

This mode makes it possible to adjust the master tuning of cymbal-type sounds.

- * (TR-606/TR-808 sounds only)

1. While holding down the [PTN SELECT] button, turn on the power.
2. Press pad [8] to switch the operating mode.

ON (lit)	Use the CH [TUNE] knob to simultaneously adjust the tuning of CH and OH. The CH [LEVEL] fader simultaneously adjusts the volume of CH and OH. The OH [TUNE] knob adjusts the master tuning of cymbal-type sounds (TR-606/TR-808 sounds only).
OFF (unlit)	The CH/OH tuning and volume are adjusted by each controller (default setting).

Fixed a problem when the sequencer is running

- We fixed a problem that had caused notes to sometimes be unintentionally delayed.
- We fixed a problem that had caused data differing from that listed in the MIDI implementation chart to be output when using alternate sounds.

Fixed a problem in INST PLAY

We fixed a problem that had caused the wrong MIDI data to be output when the ROLL button is operated while muted.

Fixed a problem in SIDE CHAIN operation

We fixed a problem that had caused the SD (snare drum) COMP to stop working when the SIDE CHAIN type is set to 4 or 7.

Contents of Ver. 1.12

Switching the pattern sequencer's operating mode

Now you can change the operating mode of the pattern sequencer.

- * Until Ver. 1.11, the sequencer operated with timing that models the TR-808.

1. While holding down the [PTN SELECT] button, turn on the power.
2. Press pad [7] to switch the operating mode.

ON (lit)	The pattern sequencer operates with precise timing.
OFF (unlit)	The pattern sequencer operates with timing that models the TR-808. (Default)

Fixed a problem with TR-REC

We fixed the problem in which it became impossible to set LAST STEP to "1."

Contents of Ver. 1.11

Adding an accent to an instrument's performance

- When using INST-PLAY (realtime performance) or INST-REC (realtime recording), you can hold down the ACCENT [STEP] button and press a pad to add an accent to the specified step.
To adjust the volume of the accent, use the ACCENT [LEVEL] knob in the same way as for TR-REC (step recording).
- INST-REC (realtime recording) now lets you record an accent at the step location that you play.

Color indication of the instrument's sound (tone)

When selecting a tone, the color that is shown when you press a pad now distinguishes the tone.

TR-808 type	Pink
TR-909 type	Yellow

Fixed a problem with ASSIGNABLE OUT

We have fixed a problem that had caused the effect sound to be sent to MIX OUT when an instrument with reverb or delay applied was assigned to ASSIGNABLE OUT.

- * Properly speaking, an instrument assigned to ASSIGNABLE OUT should not be output from MIX OUT.

Contents of Ver. 1.10

Instrument gain setting

1. Press the [KIT] button.
2. Turn the [TEMPO] knob while holding down each instrument button from [BD] to [RC].

Its range is from 0 to 200 (-24 dB to +24 dB).
This parameter is stored within each kit.

Scatter 1 cycle on

Press [ON] while holding down the [DEPTH] button.
Scatter is enabled in current cycle only.

Scatter [ON] button mode

1. While holding down the [PTN SELECT] button, turn on the power.
2. Press [STEP5].

ON	Momentary
OFF	Latch (default)

Improved roll function

To play rolls, you can either press the instrument play buttons ([STEP1]–[STEP11]) first and then the roll variation ([STEP12]–[STEP15]) buttons, or vice versa.

Data backup/restore

● Backup

1. Hold down [STEP2] and switch on the power.
2. Connect your computer to the TR-8's USB port via USB cable.
3. Open the "TR-8" drive folder on your computer.
4. Copy the TR-8 kit/pattern files in the "BACKUP" folder to your computer.

KIT 1–16	TR8_KIT1.PRM–TR8_KIT16.PRM
PATTERN 1–16	TR8_PTN1.PRM–TR8_PTN16.PRM

5. After copying is completed, disconnect the USB cable.

Windows 8/7

Right-click on the "TR-8" icon in "My Computer" and execute "Eject."

Mac OS

Drag the "TR-8" icon to the Trash icon in the Dock.

6. Turn the TR-8 power off.

● Restore

1. Hold down [STEP2] and switch on the power.
2. Connect your computer to the TR-8 USB port via USB cable.
3. Open the "TR-8" drive folder on your computer.
4. Copy the TR-8 kit/pattern files into the "RESTORE" folder.
5. After copying is completed, disconnect the USB cable.

Windows 8/7

Right-click on the "TR-8" icon in "My Computer" and execute "Eject."

Mac OS

Drag the "TR-8" icon to the Trash icon in the Dock.

6. Turn the TR-8 power off.

Lock pattern data

Turn the [TEMPO] knob while holding down the [PTN SELECT] button to lock or unlock the current pattern.

When pattern is locked any editing is erased in the case of turning off the power or choosing another pattern.

Edit Pattern A/B while playing the sequencer

Press the [A] or the [B] button while holding down the [TR-REC] button.

Sync reset

Press the [START/STOP] button while holding down the [TAP] button.
When you play a pattern, it returns to the beginning immediately.

MIDI Local On/Off and MIDI Controller mode

1. Stop the sequencer.
2. Turn the [SCATTER] knob while holding down the [LAST STEP] button.

LOCAL ON	It produces sound through any operation including external MIDI message.
LOCAL OFF	It produces sound only through external MIDI message.
MIDI CONTROLLER	It doesn't produce sound through any operation, only outputs MIDI message.

MIDI velocity is variable via accent setting

Select kit number via program change messages

MIDI implementation of scatter via control change

CC#70	SCATTER SW
CC#68	SCATTER TYPE
CC#69	SCATTER DEPTH

MIDI implementation of effect via note messages

C0	ACCENT PATTERN ALL ON/OFF
D0	REVERB PATTERN ALL ON/OFF
E0	DELAY PATTERN ALL ON/OFF
F0	EXT. IN PATTERN ALL ON/OFF
G0	ACCENT PATTERN ALL MUTE
A0	REVERB PATTERN ALL MUTE
B0	DELAY PATTERN ALL MUTE
C1	EXT. IN PATTERN ALL MUTE

Real time recording via external MIDI messages

MIDI Off

No MIDI messages are transmitted out when the MIDI channel is set to OFF.

Option to receive or ignore MIDI play/stop messages

1. While holding down the [PTN SELECT] button, turn on the power.
2. Press [STEP6].

ON	Only MIDI clock is received
OFF	MIDI clock, play, and stop messages are received (default)