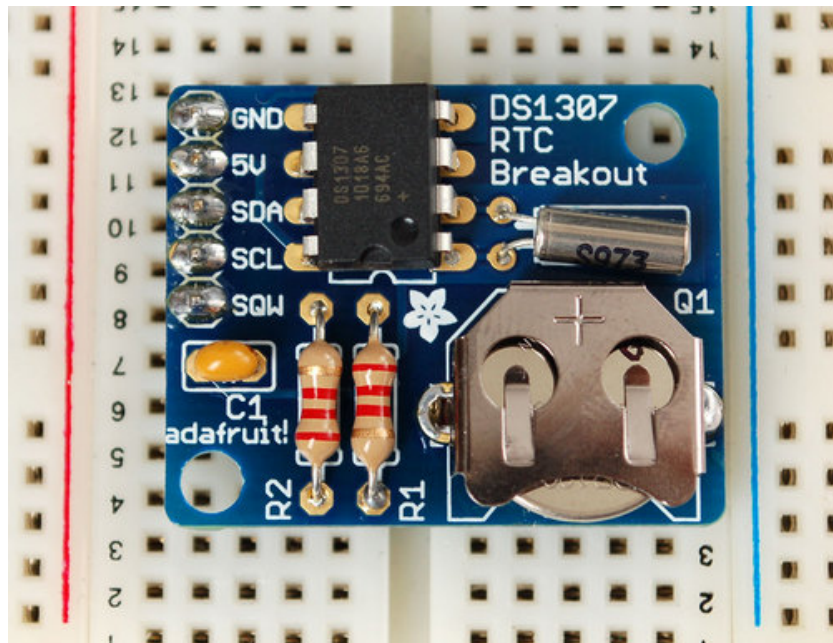




## DS1307 Real Time Clock Breakout Board Kit

Created by Tyler Cooper

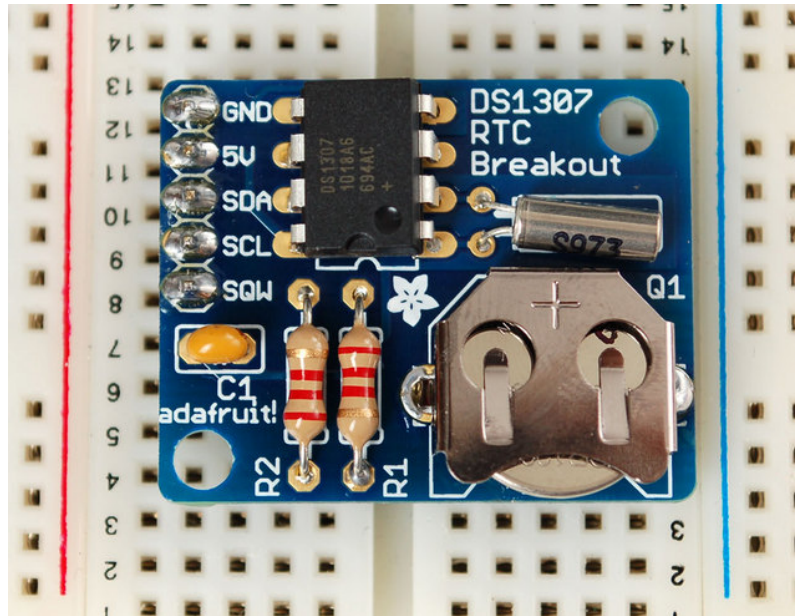


Last updated on 2013-09-02 12:45:19 PM EDT

## Guide Contents

Guide Contents	2
Overview	3
What is an RTC?	4
Parts List	6
Assembly	8
Arduino Library	13
Wiring It Up	14
Understanding the Code	16
First RTC Test	16
Setting the Time	18
Reading the Time	18
Downloads	20

## Overview



This is a great battery-backed real time clock (RTC) that allows your microcontroller project to keep track of time even if it is reprogrammed, or if the power is lost. Perfect for datalogging, clock-building, time stamping, timers and alarms, etc. The DS1307 is the most popular RTC, and works best with 5V-based chips such as the Arduino.

- All parts including PCB, header and battery are included
- Quick to assemble and use
- Plugs into any breadboard, or you can use wires
- We have example code and library for Arduino with a walkthrough on our documentation page
- Two mounting holes
- Will keep time for 5 years or more

This breakout board is a kit and requires some light soldering which should only take about 15 minutes.

## What is an RTC?

A real time clock is basically just like a watch - it runs on a battery and keeps time for you even when there is a power outage! Using an RTC, you can keep track of long timelines, even if you reprogram your microcontroller or disconnect it from USB or a power plug.

Most microcontrollers, including the Arduino, have a built-in timekeeper called **millis()** and there are also timers built into the chip that can keep track of longer time periods like minutes or days. So why would you want to have a separate RTC chip? Well, the biggest reason is that **millis()** only keeps track of time *since the Arduino was last powered* - . That means that when the power is turned on, the millisecond timer is set back to 0. The Arduino doesn't know that it's 'Tuesday' or 'March 8th', all it can tell is 'It's been 14,000 milliseconds since I was last turned on'.

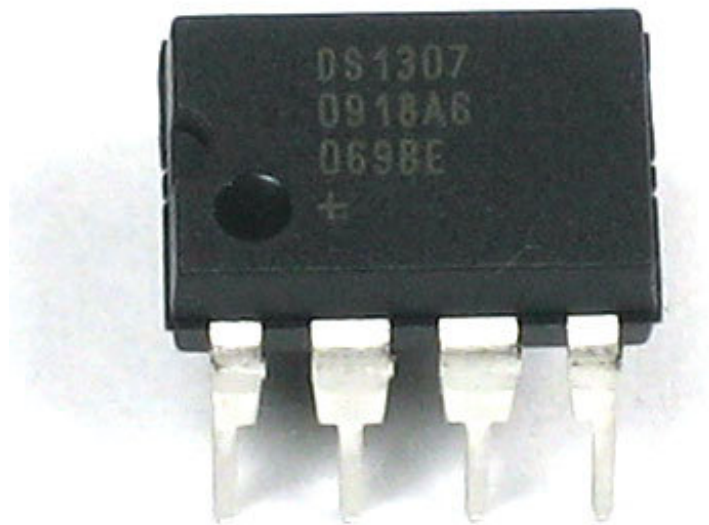
OK so what if you wanted to set the time on the Arduino? You'd have to program in the date and time and you could have it count from that point on. But if it lost power, you'd have to reset the time. Much like very cheap alarm clocks: every time they lose power they blink **12:00**

While this sort of basic timekeeping is OK for some projects, some projects such as data-loggers, clocks, etc will need to have **consistent timekeeping that doesn't reset when the Arduino battery dies or is reprogrammed**. Thus, we include a separate RTC! The RTC chip is a specialized chip that just keeps track of time. It can count leap-years and knows how many days are in a month, but it doesn't take care of Daylight Savings Time (because it changes from place to place)



The image above shows a computer motherboard with a Real Time Clock called the **DS1387** (<http://adafru.it/aX0>). There's a lithium battery in there which is why it's so big.



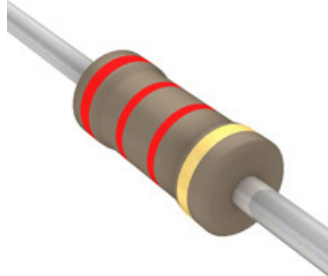


The RTC we'll be using is the **DS1307** (<http://adafru.it/con>). It's low cost, easy to solder, and can run for years on a very small coin cell.



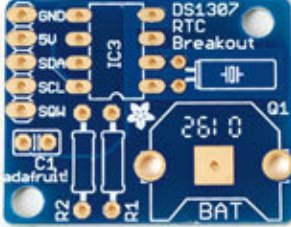


As long as it has a coin cell to run it, the DS1307 will merrily tick along for a long time, even when the Arduino loses power, or is reprogrammed.

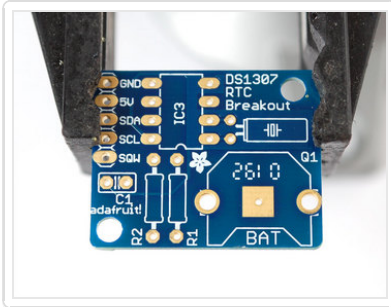
You MUST have a coin cell installed for the RTC to work, if there is no coin cell, you should pull the battery pin low.

## Parts List

Image	Name	Description	Part Information	Quantity
	IC2	Real time clock chip	<a href="#">DS1307</a>	1
	Q1	32.768 KHz, 12.5 pF watch crystal	<a href="#">Generic 32.768KHz crystal</a>	1
	R1, R2	1/4W 5% 2.2K resistor Red, Red, Red, Gold	<a href="#">Generic</a>	2
	C1	0.1uF ceramic capacitor (104)	<a href="#">Generic</a>	1
		5 pin male header (1x5)	<a href="#">Generic</a>	1

	<b>BATT</b>	12mm 3V lithium coin cell	<a href="#">CR1220</a>	1
	<b>BATT'</b>	12mm coin cell holder	<a href="#">Keystone 3001</a>	1
	<b>PCB</b>	Circuit board	<a href="#">Adafruit Industries</a>	1

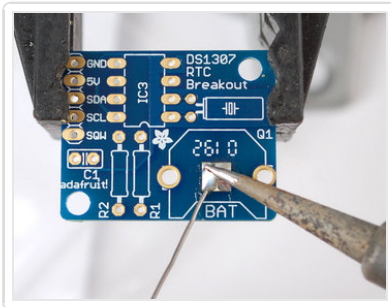
## Assembly



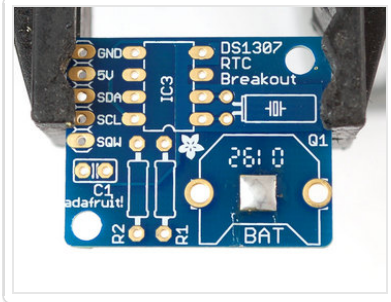
Prepare to assemble the kit by checking the parts list and verifying you have everything!

Next, heat up your soldering iron and clear off your desk.

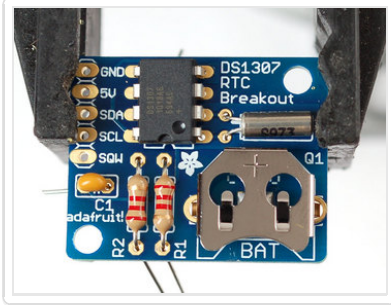
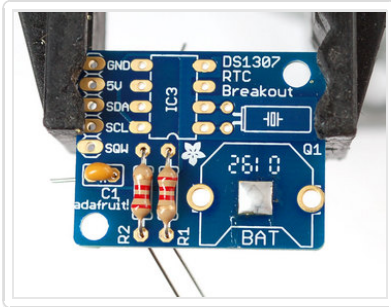
Place the circuit board in a vise so that you can easily work on it.



Begin by soldering a small bump onto the negative pad of the battery: this will make better contact!



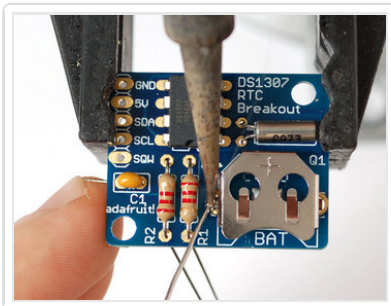




Place the two 2.2K resistors, and the ceramic capacitor. They are symmetric so no need to worry about direction.

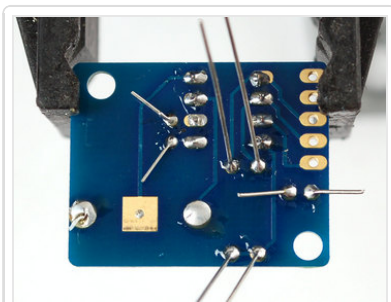
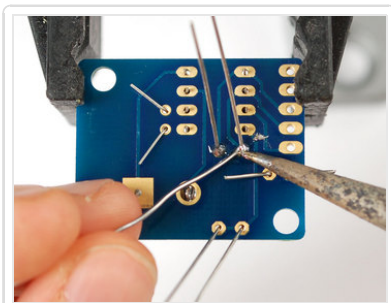
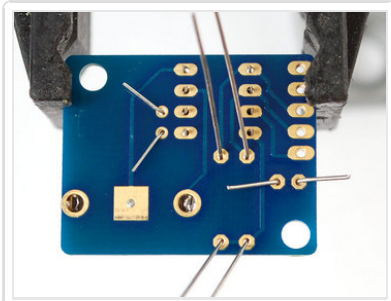
Then place the crystal (also symmetric), the battery holder (goes on so that the battery can slip in the side) and the RTC chip.

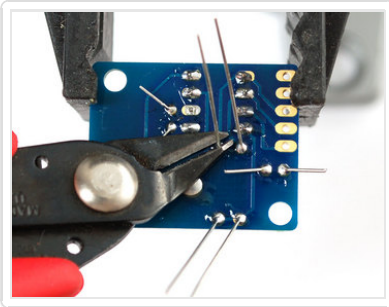
The RTC chip must be placed so that the notch/dot on the end match the silkscreen. Look at the photo on the left, the notch is pointing down. Double check this before soldering in the chip because its quite hard to undo!



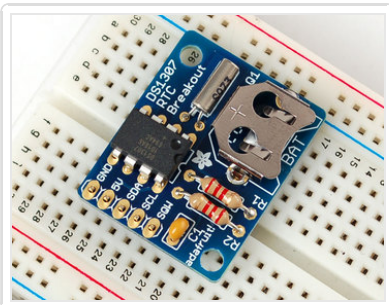
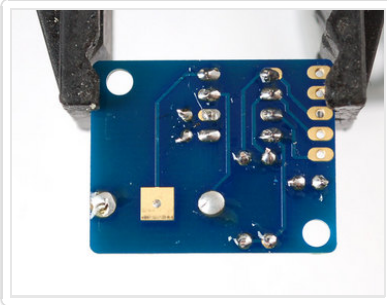
To keep the battery holder from falling out, you may want to 'tack' solder it from the top.

Then flip over the board and solder all the pins.



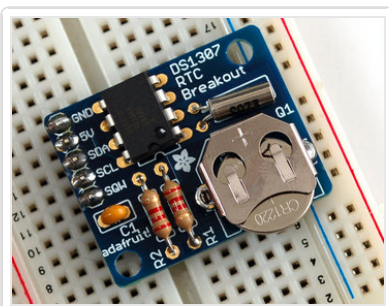
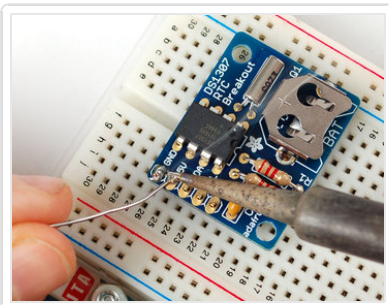


Clip the leads of the resistors, crystal and capacitor short.



If you'd like to use the header to plug the breakout board into something, place the header in a breadboard, long side down and place the board so that the short pins stick thru the pads.

Solder them in place.



Insert the battery so that the flat + side is UP. *The battery will last for many years, 5 or more, so no need to ever remove or replace it.*

**You MUST have a coin cell installed for the RTC to work, if there is no coin cell, it will act strangely and possibly hang the Arduino so ALWAYS make SURE there's a battery installed, even if its a dead battery.**



## Arduino Library

---

Any 5V microcontroller with I2C built-in can easily use the DS1307. We will demonstrate how to use it with an Arduino since it is a popular microcontroller platform.

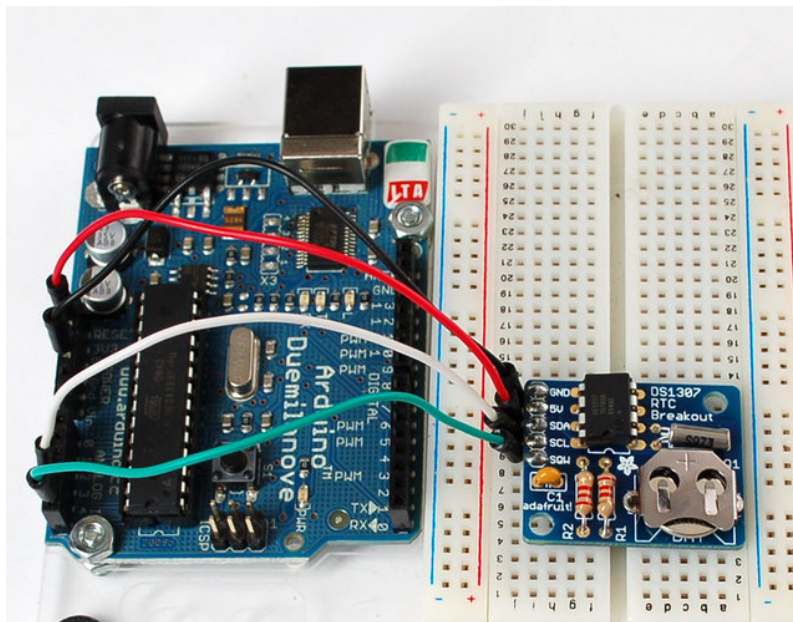
For the RTC library, we'll be using a fork of JeeLab's excellent RTC library [RTCLib](http://adafru.it/aX2) (<http://adafru.it/aX2>)- a library for getting and setting time from a DS1307 (originally written by JeeLab, our version is slightly different so please **only use ours** to make sure its compatible!) - download the .zip by clicking on **ZIP** (top navbar) and rename the uncompressed folder RTCLib Then install it in your Arduino directory (<http://adafru.it/aYG>) in a folder called **RTCLib**.

**If you're still having difficulties installing the library, check out our tutorial on installing Arduino libraries (<http://adafru.it/aYM>)**

## Wiring It Up

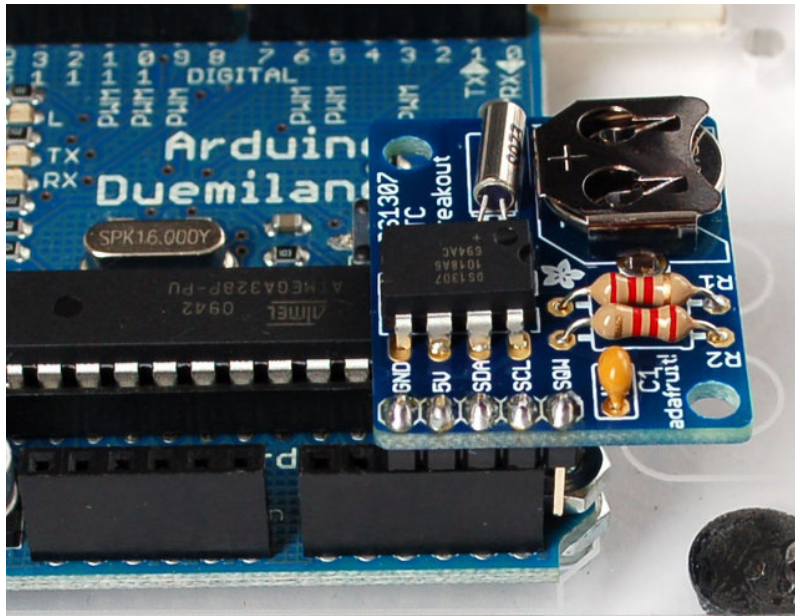
There are only 5 pins: **5V GND SCL SDA SQW**.

- **5V** is used to power to the RTC chip when you want to query it for the time. If there is no 5V signal, the chip goes to sleep using the coin cell for backup.
- **GND** is common ground and is required
- **SCL** is the i2c clock pin - its required to talk to the RTC
- **SDA** is the i2c data pin - its required to talk to the RTC
- **SQW** is the optional square-wave output you can get from the RTC if you have configured it to do so. Most people don't need or use this pin



If you set analog pin 3 (digital 17) to an OUTPUT and HIGH and analog pin 2 (digital 16) to an OUTPUT and LOW you can power the RTC directly from the pins!

Connect Arduino analog pin 4 to SDA. Connect Arduino analog pin 5 to SCL.





## Understanding the Code

### First RTC Test

The first thing we'll demonstrate is a test sketch that will read the time from the RTC once a second. We'll also show what happens if you remove the battery and replace it since that causes the RTC to halt. So to start, remove the battery from the holder while the Arduino is not powered or plugged into USB. Wait 3 seconds and then replace the battery. This resets the RTC chip. Now load up the following sketch (which is also found in

**Examples→RTCLib→ds1307**) and upload it to your Arduino with the datalogger shield on!

(Don't forget to install the DS1307 library before running the code below) (<http://adafru.it/cDV>)

```
// Date and time functions using a DS1307 RTC connected via I2C and Wire lib

#include <Wire.h>
#include "RTCLib.h"

RTC_DS1307 RTC;

void setup () {
  Serial.begin(57600);
  Wire.begin();
  RTC.begin();

  if (! RTC.isrunning()) {
    Serial.println("RTC is NOT running!");
    // following line sets the RTC to the date & time this sketch was compiled
    RTC.adjust(DateTime(__DATE__, __TIME__));
  }
}

void loop () {
  DateTime now = RTC.now();

  Serial.print(now.year(), DEC);
  Serial.print('/');
  Serial.print(now.month(), DEC);
  Serial.print('/');
  Serial.print(now.day(), DEC);
  Serial.print(' ');
  Serial.print(now.hour(), DEC);
  Serial.print(':');
  Serial.print(now.minute(), DEC);
  Serial.print(':');
  Serial.print(now.second(), DEC);
  Serial.println();

  Serial.print(" since 1970 = ");
  Serial.print(now.unixtime());
  Serial.print("s = ");
```



```

Serial.print(now.unixtime() / 86400L);
Serial.println("d");

// calculate a date which is 7 days and 30 seconds into the future
DateTime future (now.unixtime() + 7 * 86400L + 30);

Serial.print(" now + 7d + 30s: ");
Serial.print(future.year(), DEC);
Serial.print('/');
Serial.print(future.month(), DEC);
Serial.print('/');
Serial.print(future.day(), DEC);
Serial.print(' ');
Serial.print(future.hour(), DEC);
Serial.print(':');
Serial.print(future.minute(), DEC);
Serial.print(':');
Serial.print(future.second(), DEC);
Serial.println();

Serial.println();
delay(3000);
}

```

Now run the Serial terminal and make sure the baud rate is set correctly at 57600 bps

you should see the following:

```

COM8
Send

RTC is NOT running!
2000/0/0 0:0:0
  since 2000 = 1367256704s = 15824d
  now + 7d + 30s: 2043/5/6 17:32:14

2000/0/0 0:0:0
  since 2000 = 1367256704s = 15824d
  now + 7d + 30s: 2043/5/6 17:32:14

2000/0/0 0:0:0
  since 2000 = 1367256704s = 15824d
  now + 7d + 30s: 2043/5/6 17:32:14

2000/0/0 0:0:0
  since 2000 = 1367256704s = 15824d
  now + 7d + 30s: 2043/5/6 17:32:14

57600 baud

```

Whenever the RTC chip loses all power (including the backup battery) it will report the time as 0:0:0 and it won't count seconds (its stopped). Whenever you set the time, this will kick start the clock ticking. So basically the upshot here is that you should never ever remove the battery once you've set the time. You shouldn't have to and the battery holder is very snug so unless the board is crushed, the battery won't 'fall out'

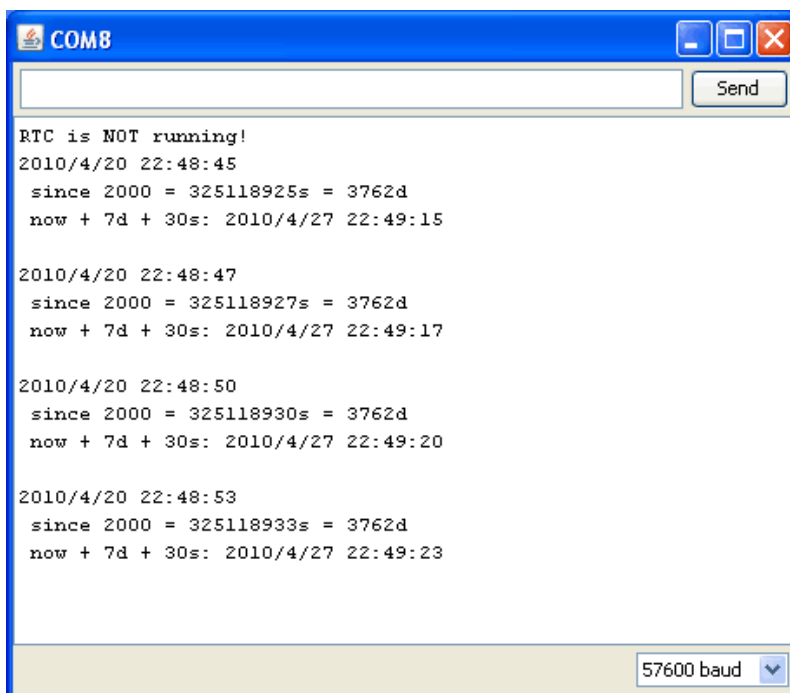
## Setting the Time

With the same sketch loaded, uncomment the line that starts with **RTC.adjust** like so:

```
// following line sets the RTC to the date & time this sketch was compiled
RTC.adjust(DateTime(__DATE__, __TIME__));
```

This line is very cute, what it does is take the Date and Time according the computer you're using (right when you compile the code) and uses that to program the RTC. If your computer time is not set right you should fix that first. Then you must press the **Upload** button to compile and then immediately upload. If you compile and then upload later, the clock will be off by that amount of time.

Then open up the Serial monitor window to show that the time has been set.



The screenshot shows the Serial Monitor window titled "COM8". It displays the output of the RTC setup code. The output shows the RTC is NOT running, followed by four lines of time data. Each line shows the current date and time, the time since 2000, and the time 7 days and 30 seconds later. The baud rate is set to 57600.

```
RTC is NOT running!
2010/4/20 22:48:45
  since 2000 = 325118925s = 3762d
  now + 7d + 30s: 2010/4/27 22:49:15

2010/4/20 22:48:47
  since 2000 = 325118927s = 3762d
  now + 7d + 30s: 2010/4/27 22:49:17

2010/4/20 22:48:50
  since 2000 = 325118930s = 3762d
  now + 7d + 30s: 2010/4/27 22:49:20

2010/4/20 22:48:53
  since 2000 = 325118933s = 3762d
  now + 7d + 30s: 2010/4/27 22:49:23
```

From now on, you won't have to ever set the time again: the battery will last 5 or more years.

## Reading the Time

Now that the RTC is merrily ticking away, we'll want to query it for the time. Let's look at the sketch again to see how this is done.

```
void loop () {
  DateTime now = RTC.now();

  Serial.print(now.year(), DEC);
  Serial.print('/');
  Serial.print(now.month(), DEC);
```

```
Serial.print('/');
Serial.print(now.day(), DEC);
Serial.print(' ');
Serial.print(now.hour(), DEC);
Serial.print(':');
Serial.print(now.minute(), DEC);
Serial.print(':');
Serial.print(now.second(), DEC);
Serial.println();
```

There's pretty much only one way to get the time using the RTCLib, which is to call **now()**, a function that returns a DateTime object that describes the year, month, day, hour, minute and second when you called **now()**.

There are some RTC libraries that instead have you call something like **RTC.year()** and **RTC.hour()** to get the current year and hour. However, there's one problem where if you happen to ask for the minute right at **3:14:59** just before the next minute rolls over, and then the second right after the minute rolls over (so at **3:15:00**) you'll see the time as **3:14:00** which is a minute off. If you did it the other way around you could get **3:15:59** - so one minute off in the other direction.

Because this is not an especially unlikely occurrence - particularly if you're querying the time pretty often - we take a 'snapshot' of the time from the RTC all at once and then we can pull it apart into **day()** or **second()** as seen above. It's a tiny bit more effort but we think it's worth it to avoid mistakes!

We can also get a 'timestamp' out of the DateTime object by calling **unixtime** which counts the number of seconds (not counting leapseconds) since midnight, January 1st 1970

```
Serial.print(" since 1970 = ");
Serial.print(now.unixtime());
Serial.print("s = ");
Serial.print(now.unixtime() / 86400L);
Serial.println("d");
```

Since there are  $60 \times 60 \times 24 = 86400$  seconds in a day, we can easily count days since then as well. This might be useful when you want to keep track of how much time has passed since the last query, making some math a lot easier (like checking if it's been 5 minutes later, just see if **unixtime()** has increased by 300, you don't have to worry about hour changes).

## Downloads

---

Schematic and layout files can be found at GitHub - click [Download Source](#) to get the zip! (<http://adafru.it/aX3>)